

HYDRAULIC EXCAVATOR **SY135C_{T3}**



SANY
AMERICA INC.

Rated Power

98 hp / 73 kW

Operating Weight

30,424 lb / 13800 kg

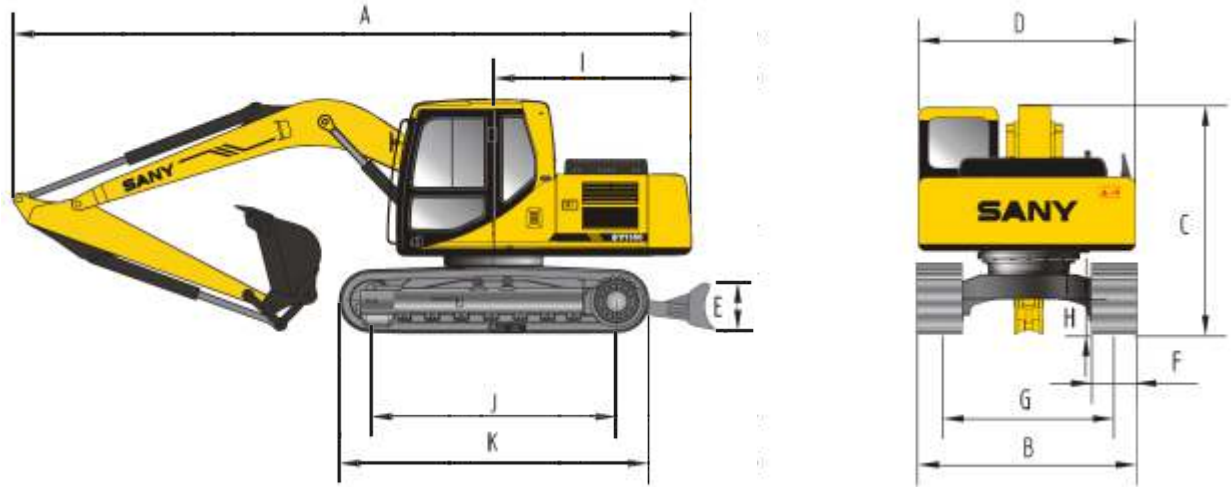
Dig Depth

18' 1" / 5500 mm

Bucket Breakout

20,682 lbf / 92 kN

SY135C DIMENSIONS & SPECIFICATIONS

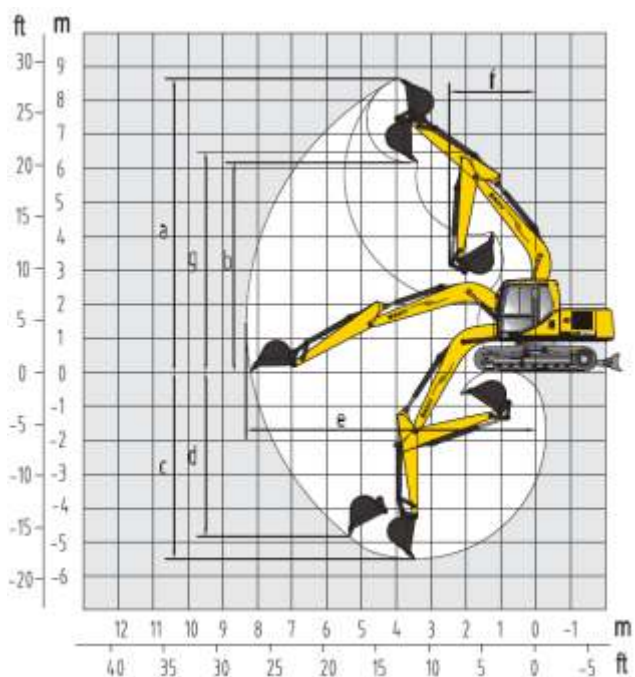


OVERALL DIMENSIONS

A. Transport Length	25' 3" (7700 mm)
B. Transport Width	8' 6" (2590 mm)
C. Transport Height	9' 3" (2815 mm)
D. Upper Width	8' 2" (2490 mm)
E. Blade Height	1' 6" (458 mm)
F. Track Shoe Width (standard)	1' 11" (600 mm)
G. Track Gauge	6' 6" (1990 mm)
H. Minimum Ground Clearance	1' 5" (425 mm)
I. Tail Swing Radius	7' 3" (2205 mm)
J. Length Center Idler to Center Sprocket	9' 7" (2930 mm)
K. Track Length	12' 0" (3665 mm)
Boom Length	15' 1" (4600 mm)
Arm Length (standard)	8' 2" (2500 mm)

MACHINE PARAMETERS

Operating Weight	30,424 lb (13800 kg)
Engine Type	Isuzu AJ-4JJ1X T3
Engine Max Power (Net)	98 hp (73 kW) @ 2000rpm
Engine Max Torque	279 lbf (378 Nm) @ 1600 rpm
Engine Displacement	183 in ³ (3.0 liter)
Alternator	40A/24V
Main Pump Flow	2x 29 gpm (2x110 lpm)
Swing Speed	12 rpm
Travel Speed	2.2/3.4 mph (3.5/5.5 km/h)
Tractive Effort	24,729 lbf (110 kN)
Max Arm Digging Force (ISO)	20,682 lbf (92 kN)
Number of Upper Rollers	1
Number of Lower Rollers	7
Fuel Tank Capacity	63.4 gal (240 liter)
Hydraulic Tank Capacity	69.6 gal (150 liter)
Cooling System Capacity	5.8 gal (22 liter)
Engine Oil Capacity	3.5 gal (13.2 liter)
Ground Pressure (31.5"/800mm shoes)	6 psi (41.7 kPa)



WORKING RANGE

a Maximum Digging Height	28' 4" (8645 mm)
b Maximum Dumping Height	20' 3" (6175 mm)
c Maximum Digging Depth	18' 1" (5500 mm)
d Maximum Vertical Wall Digging Depth	15' 11" (4850 mm)
e Maximum Digging Reach	27' 2" (8290 mm)
f Minimum Swing Radius	8' 2" (2500 mm)
g Maximum Height at Minimum Swing Radius	21' 4" (6500 mm)



SANY
AMERICA INC.

318 Cooper Circle
Peachtree City, GA, 30269
www.sanyamerica.com